

Melt Flow Indexer ZRZ Series

ZRZ1452 Melt Flow Indexer (Fig1) is a high precise melt testing instrument for the measurement of melt flow rate (MFR)/(MI) or melt volume rate (MVR) in quality control and research applications. The testing result can distinguish the viscous flow performance of thermoplastic material by the model ZRZ1452 showing its advantage in the following industries: factories, products quality testing station, scientific and research institutes, and concerned industries. Comply with the international standards ISO1133, ASTM D1238, ASTM D3364, BS2782, DIN53735, JIS K7210.

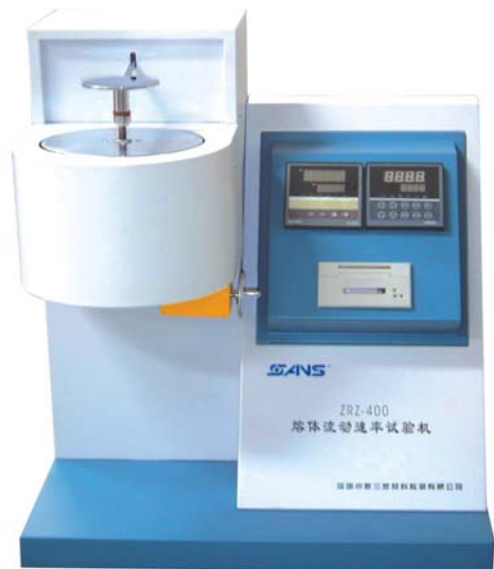


Fig1 ZRZ1452

Key Features

Two digital display control panels(Fig2)----AL808, ZRZ400 from left to right, with membrane covered buttons, comfortable touching, intuitive operating and real-time data displaying.

ZRZ400 controller can be automatic timing and controlling on the test process. Test method (MFR/MVR) can be pre-selected by the ZRZ400 control panel and be conducted automatically as preset program. And there is a friendly prompt by hum to alarm the coming end of each test step in the whole test process.

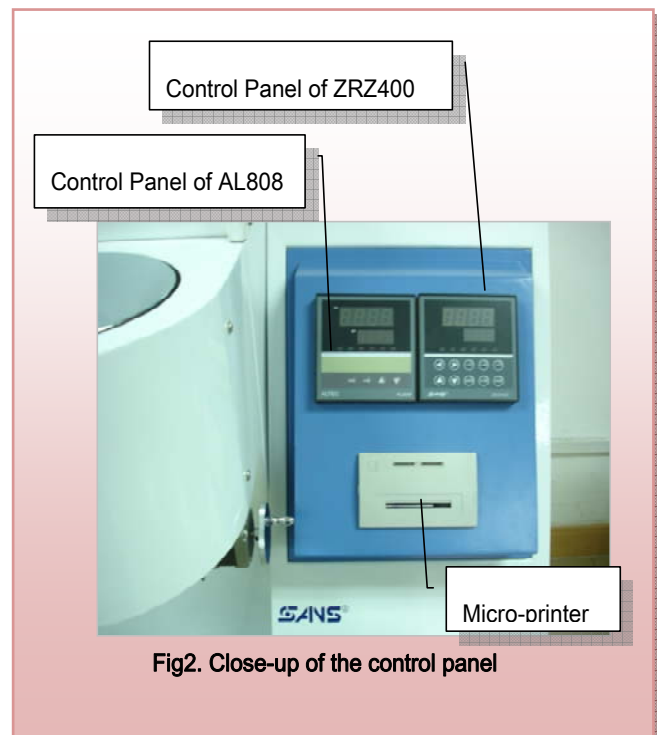


Fig2. Close-up of the control panel

- The AL808 temperature control system is configured with two groups of platinum resistor temperature transducers and one group of the two is used as spare part which makes a high reliability. And the PID
- Automatic cut-off device(Fig4), driven by motor, small size, good flexibility. It can carry out the automatic timing cut-off, jog cut-off and manual cut-off as the need of the customers.
- Built-in micro-printer(Fig2). When the Test is completed, the results will be printed on a scrip clearly only by pressing on the "Print" button.
- The displacement of the piston rod is exactly measured by the infrared sensor.
- The piston rod and the filling canister (Fig3) are all made of nitriding steel with high rigidity, ind few deformation.

algorithm is used to adjust the temperature and compensate the influence of temperature caused by the environment or undulation of power to ensure a good stability.

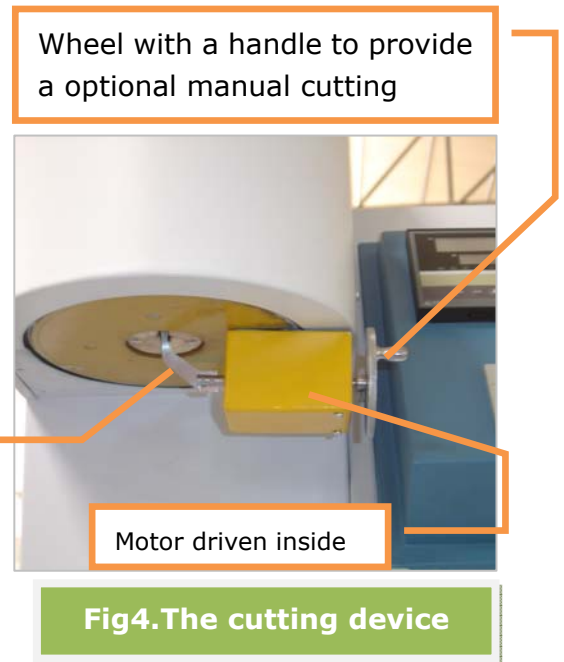
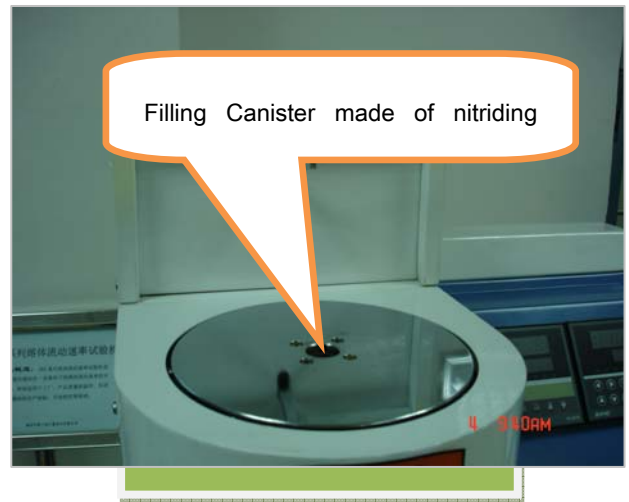


Fig4.The cutting device

A set of elaborately designed accessories (Fig5) to provide a convenient operation and maintenance.

Fig5 The accessories



Technical Specifications

		Technical Specifications
Temperature control range		ZRZ1452 100~450°C ⁽¹⁾
Temperature accuracy		±0.5°C
Temperature fluctuation		±0.5°C
Excursion in 4 hours		≤0.5°C
Temperature Resolution		0.1°C
Distribution		≤0.5°C
Time of recovering temperature after changing testing samples	minute	≤4
Timing range	second	0~6000
Resolution of timing	second	0.1~1
Inner diameter of die	mm	Φ2.095±0.005
Inner diameter of filling canister	mm	Φ9.550±0.020
Weight Load accuracy		≤±0.5%
Standard weights	g	875, 960, 1200, 1640
Possible Combination of the Standard Weights	g	325, 1200, 2160, 3800, 5000
Measurement range	g/10min	0.1 ~ 100
Dimension	mm	550×430×720
Power		220V±10%, AC, 50HZ, 3A
Weight	kg	65
Cut-off device		Automatic/Jog/Manual cut-off

(1) : Model ZRZ1402 is available with temperature range from 100~400°C

Operation Condition and Environment

1. Ambient temperature: 10°C~40°C
2. Relative humidity: ≤80%
3. Horizontal placed on solid base
4. No strong convection in open air
5. No vibration and corrosion medium.

Standard accessories

Standard Accessories	Remark	Quantity
Load frame	Including the frame, ZRZ400	1 set
Piston Rod	With a stud, a piston guide	1 piece
Standard die of $\Phi 2.095 \pm 0.005 \text{mm}$		1 piece
T-Shape Weight		1 piece
Weight of 875g		1 piece
Weight of 960g		1 piece
Weight of 1200g		1 piece
Weight of 1640g		1 piece
Cylinder Clean Rod		1 piece
Die Clean Rod of $\Phi 2.095 \pm 0.005 \text{mm}$		1 piece
Packing Rod		1 piece
Filling funnel		1 piece
Feeder		1 piece
Wooden Handle Knife		1 piece
Horizon Gage		1 piece
Cut-off blade for Spare Use		1 piece

Optional accessories

Non-standard weights: 2500g, 1600g, 10000g, 12500g, 21600g

Non-standard Inner diameter of die : $\Phi 1.180 \pm 0.010 \text{mm}$