

Pipe Pressure Resistance & Burst Testing Machine

ZNY1000 Series

ZNY1000 Series Pipe Pressure resistance & Burst Testing Machine (Fig1) consists of Microcomputer and AD813 pressure control unit including upper and lower control systems. The upper system is mainly used to complete graph processing and data management, the lower system is used to control water pressure system to reach preset pressure according to the instructions from the upper system.

The optional loading range of ZNY1000 Series is from 10Mpa up to 30Mpa, SANS patent naming for them as this in following tables:



Fig1 ZNY1000

MODEL	ZNY1107-3-A	ZNY1107-3-B	ZNY1167-3-A	ZNY1167-3-B
Pressure Accuracy	1%	1%	1%	1%
Capacity (Mpa)	10	10	16	16
Test route amount	3	3	3	3
Type	Digital	Computerized	Digital	Computerized
MODEL	ZNY1207-3-A	ZNY1207-3-B	ZNY1307-3-A	ZNY1307-3-B
Pressure Accuracy	1%	1%	1%	1%
Capacity (Mpa)	20	20	30	30
Test route amount	3	3	3	3
Type	Digital	Computerized	Digital	Computerized

- Multi-route and multi-station test, test on each route can be performed simultaneously without affecting each other. For instance, the corresponding electromagnetic valve is closed automatically when there is one route test finished, however others are still keeping testing normally. The test data and graph will be recorded in the computer automatically.
- Advanced control theory ensures accurate pressure control, steadily pressure keeping and real-time compensating the pressure automatically.
- Electric units adopt high-tech and high quality advanced elements, such as American high-accuracy pressure transducer, PAIK electromagnetism valve, German accumulator, imported pump, Japanese electric switch. That all guarantees the whole system's accuracy and reliability.
- Wide temperature control range: Test temperature can varies from 20°C to 95°C with fast heating and cooling, Stainless steel water tank assures excellent temperature keeping capability and is equipped with automatic water supply device .
- Power Test professional Test Software----mature, stable and perfect. Testing curve of Every route is displayed simultaneously and data are real-time indicated. Wonderful test results output solution and test reports printing. OFFICE compatible document format, linked with internet and tests reports editable. users can

choose their favorite way to remake the report form



Fig2.Close-up from front

at

according to their requirements.

- Grips by German technology are supplied: various style grips are waiting for your selection which is reliable, airproof, waterproof, easy to operate and convenient to clamp.
- German accumulators by Denmark technology realize the pressure keeping function and reduce the running of air compressor and extend the life and ensure the pressure accuracy.
- Automatic turnoff and recall function: the system can be restarted and go on with unfinished test after a sudden shutdown.
- American superior pressure pump offers the advanced gas punch hydrostatic function with high reliability and stability.
- Comply with international newly issued test standards, meet the hydrostatic and burst test requirement of PVC, PP-R, PE-X, PPB, and steel plastic compound pipe material, etc.

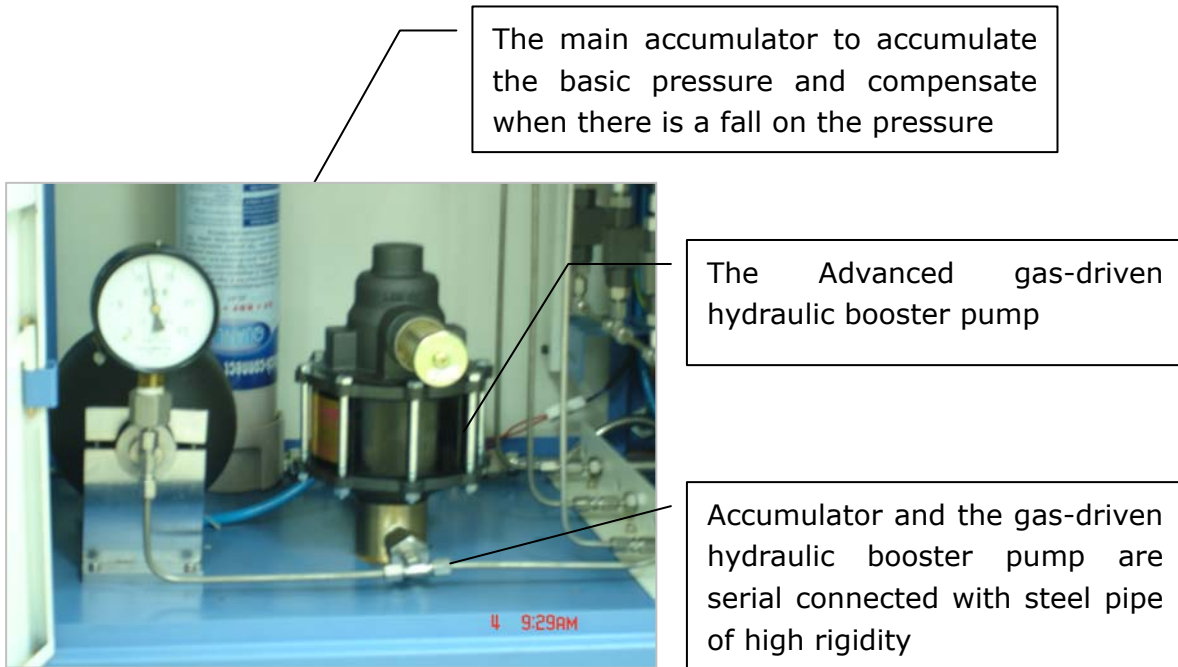


Fig3. Inside the lower part of the control tank

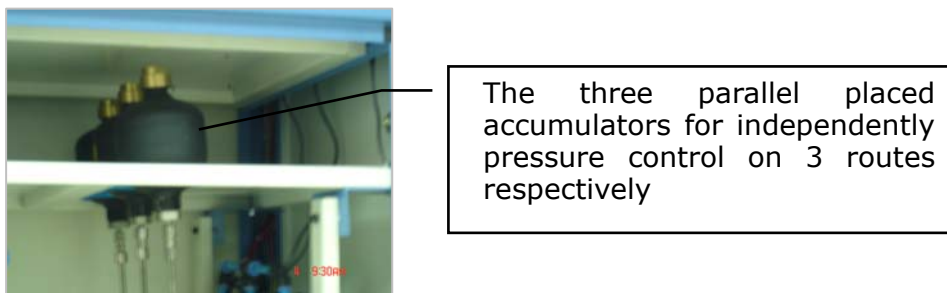


Fig4. The parallel accumulators



Fig5. Specimens and grips ready for test

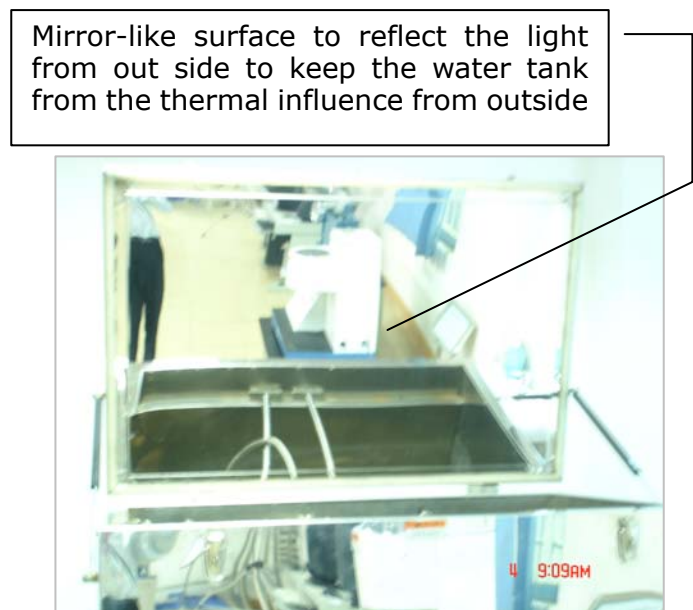


Fig6. The water tank for holding the pipe specimens

Technical Specifications

		ZNY1000 Series
Pressure Capacity	Mpa	10 (Min.5Mpa, Max.500Mpa)
Specimen diameter	mm	φ16 ~ φ630 (Max.1200mm)
Test route	route	3(Max.20)
Accuracy of pressure		≤±1%
Accuracy of constant pressure		-1% ~ +2%
Constant temperature range	°C	20°C ~ 95°C
Constant pressure range		5% ~ 100%
Temperature deflection	°C	≤±1°C
Temperature uniformity	°C	≤±1°C
Timing range		1min ~ 10000h
Timer accuracy		≤±1%
Power		3ph, 380V±10%
Size of control tank	mm	700 x 600 x 1500
Dimension of water tank		Illustrated in the following table

Dimension of different models

Model	Dimension (mm)	Type	Application for specimen diameter (mm)
A	1200×800×800	Horizontal	≤Φ110
B	1800×800×800	Horizontal	≤Φ400
C	2100×1200×1200	Horizontal	≤Φ630
D	1200×800×1200	Standing	≤Φ110
E	1200×1000×1600	Standing	≤Φ250
F	1200×1200×1900	Standing	≤Φ400

Standard Accessories

Standard Accessories	Quantity
Load frame	1 set
American exact pressure transducer	3 pieces
American superior pressure pump	1 set
PAIK electromagnetism	6 pieces
High temperature control system	1 set
German accumulator	4 pieces
Stainless steel jointer	4 pieces
Pressure control unit	3 set
LENOVO noted brand computer	1 set
CANON A4 color jet Printer	1 set
ZNY PowerTest test software	1 set

Optional Accessories

Extended Accessories of ZNY1307	Quantity
Full stainless steel Keeping temperature water tank (options according to customers' requirement)	1 set
Low temperature control system	1 set
American PUMA compressor	1 set
Grips (options according to customers' requirement)	

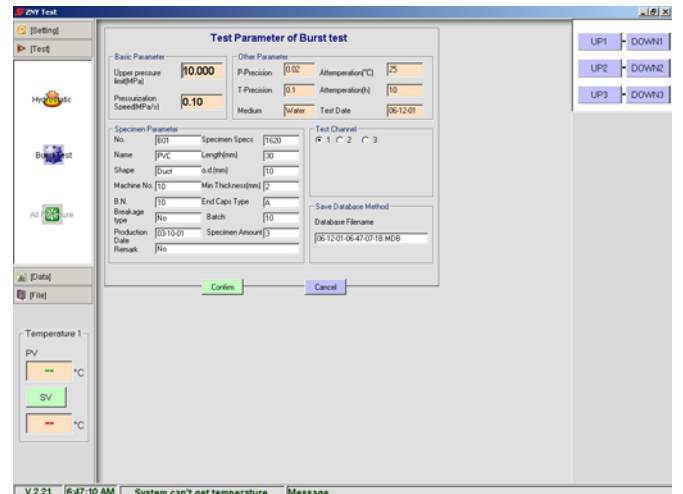
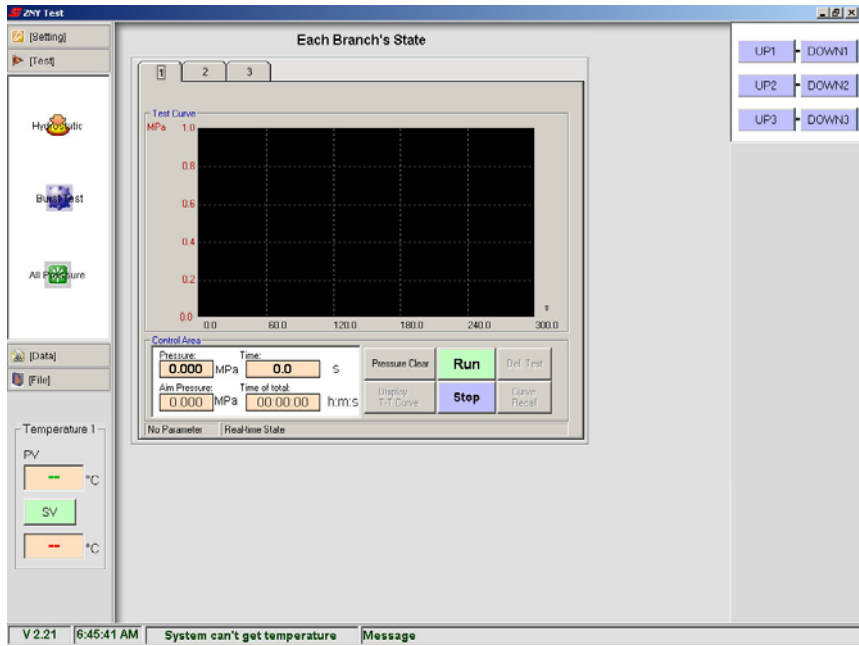
Test Software

ZNY TEST V2.0 is a brand-new designed software especially for pressure resistance and burst test applications. Also combined with temperature controller, this software can display and control temperature of water tank, to complete pipe test in cooled water or heated water.

With a more friendly and easy operation interface, this software has a more perfect test resume function when a sudden shutdown is met. And It can complete the 8760h test. And it has a powerful monitor function on test curve. There is also a more powerful function of report creation, and which made multi-route output into a single report possible.

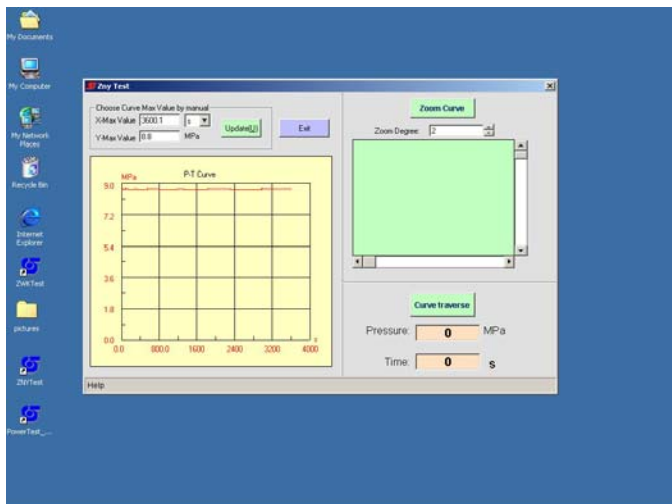
Test curve

Test interface

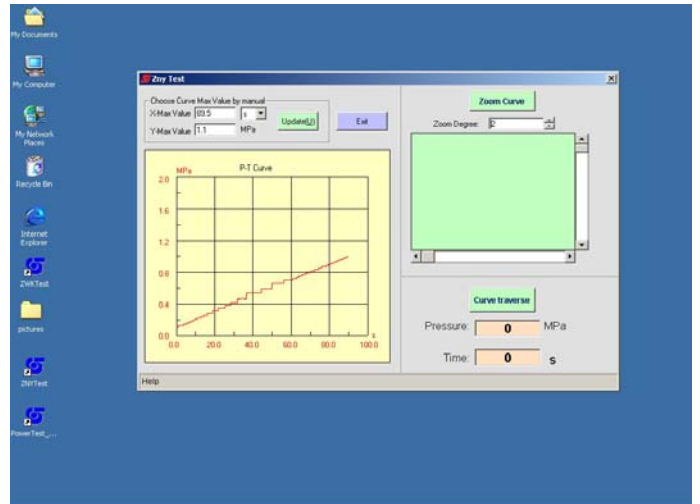


Hydrostatic Test parameter setup

Burst Test parameter setup



Hydrostatic Test report



Burst Test report