

Rebar Bending Testing Machine

ZLW401



Configuration

ZLW401 series is originally designed to meet exacting requirements of testing bend-resistance performance of reinforced rolling steel bars and features hydraulic loading, motor driving and compact construction with low noise, high reliable performance and is easy to operate .It is equipped with protection covers to protect users against injury caused by specimens and is equipped with manual crank to adjust clearance between supports to accommodate specimens

of varying diameters and shapes, so does changeable punch pin. It is equipped with manual handle to control testing process and the capacity is 160kN.

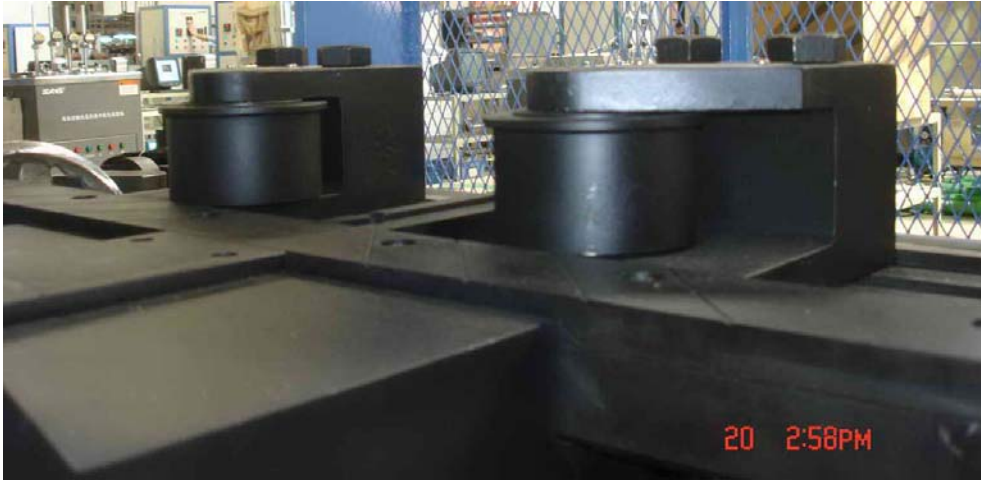
Functions and Applications

ZLW401' systems are guaranteed to meet ISO 15579-2000, ISO679, ISO 7438-1985 and other international and national specifications ,which are suitable for bend test of rebar to determine bend-resistant performance of timbering rebar and weld joints. The punch pin is changeable to meet requirements of specimens with varying dimensions. With experienced engineers, we can research and design specific machines for customers according to order.

With knight after service of experienced experts and high quality of testing machine, the machine is widely used in metallurgy, ultimate R&D department, Universities and Academies, Quality control and Inspection department and concerned industries etc.

Key features

1. With compact and beautiful configuration;
2. With simple structure and easy to operate;
3. With manual valve to control testing procedure to improve efficiency.



Close-up of supports.

Technical Specifications

Model	ZLW401
Capacity (kN)	160
Span between Supports (mm)	118-440
Diameter of Supports (mm)	Φ100
Diameter of Bend (mm)	Φ6~40
Ram Stroke (mm)	360
Ram speed without load(mm/in)	260
Bending Angle	0°~180°
Cylinder Diameter (mm)	Φ110
Pressure of System	16Mpa
Power consumption(kW)	1.1
Weight(kg)	400
Overall weight(L*W*Hmm)	1,450*950*1,100
Hydraulic oil	38 L/L-HM46 (prepared by customers)

Standard Accessories

Model	ZLW401
Load Frame	One set
Supports	One set
Pedestal	One set
Hydraulic Oil Tank	One set
Hydraulic Station (Oil nk, Oil Pump and Valve)	One set
Electric Control System	One set
	One set
Load Nose	Diameter (mm): 3、4、5、8、10、12、14、16、16.5、18、20、21、24、25.5、30、31.5、32、36、40、42、44、48、50、54、56、60、64、66、72、75、80、88、100、112、128、140、144、160、180、200, for each one.